

AI-Powered Healthcare Chat Platform for Patient Engagement & Appointments

1st Chitra J
Assistant Professor
Prathyusha Engineering College
Tiruvallur, India
jchitra.cse@prathyusha.edu.in

3rd Lokesh Sachin S
Department of Computer Science Engineering
Prathyusha Engineering College
Tiruvallur, India
lokeshsachin1000@gmail.com

2nd Lokesh P
Department of Computer Science Engineering
Prathyusha Engineering College
Tiruvallur, India
lokeshmagesh265@gmail.com

4th Karthikeyan P
Department of Computer Science Engineering
Prathyusha Engineering College
Tiruvallur, India
karthi50020607@gmail.com

Abstract— Healthcare institutions face challenges in managing patient communication and appointment scheduling efficiently. Traditional systems rely heavily on manual coordination, leading to delays, increased administrative workload, and increased patient dissatisfaction. This paper proposes an AI-powered healthcare chat platform that automates patient interaction and appointment management using chatbot technology and workflow automation. The system integrates conversational interfaces, backend APIs, and automated workflow orchestration to enable real-time appointment booking, modification, and notification services. Experimental evaluation demonstrates improved response time, reduced scheduling errors, and enhanced operational efficiency compared with traditional appointment management systems.

Keywords— *Healthcare automation; Conversational agents; Workflow orchestration; Event-driven architecture; Appointment scheduling; Digital health systems.*

I. INTRODUCTION

The rapid digitization of healthcare services has significantly improved patient engagement and accessibility, but it has also exposed major inefficiencies in traditional patient communication and appointment management systems [2]. Current healthcare platforms primarily rely on manual scheduling, phone calls, and basic digital interfaces that lack intelligent automation and real-time workflow coordination [3]. While these systems provide basic functionality, they fail to ensure efficient communication, automated scheduling, and continuous patient engagement. As identified in prior research [1], manual and semi-digital healthcare workflows increase administrative burden, introduce delays, and reduce operational efficiency, particularly in clinics handling large volumes of patient requests.

The problem is further intensified by the growing demand for instant healthcare communication and automated service availability. Patients increasingly expect real-time responses,

automated appointment booking, and seamless interaction through modern messaging platforms such as Chat Interface and web-based chat systems. However, traditional healthcare systems lack intelligent chatbot automation and workflow orchestration capabilities to process patient requests automatically [4]. This results in delayed responses, missed appointments, inefficient scheduling, and increased dependency on human staff. Additionally, the absence of automated backend workflow integration prevents healthcare providers from achieving scalable and efficient patient management [5].

Existing healthcare communication systems also lack intelligent workflow automation and seamless integration with backend services through APIs and event trigger mechanisms. Most platforms require manual intervention for appointment scheduling, patient notifications, and workflow execution, which increases operational costs and reduces system reliability [6]. Furthermore, the absence of AI-driven chatbot automation and process automation limits real-time interaction and prevents autonomous execution of healthcare workflows. There is a significant research gap in integrating AI-powered chatbot systems with no-code and low-code workflow automation platforms such as Workflow Orchestration Engine to enable intelligent, automated, and scalable patient engagement and appointment management.

To address these challenges, this paper introduces an AI-Powered Healthcare Chat Platform for Patient Engagement & Appointments using Workflow Orchestration Engine-based workflow automation and AI chatbot integration. The proposed system replaces manual communication with an intelligent chatbot interface integrated with Chat Interface Module, APIs, and event trigger mechanisms to enable automated patient interaction and appointment scheduling. The platform leverages no-code and low-code automation using Workflow Orchestration Engine to orchestrate backend

workflows, process patient requests, manage appointment data, and trigger automated notifications. This architecture ensures efficient, scalable, and real-time healthcare workflow automation while reducing administrative workload and improving patient engagement. Most importantly, the system enables autonomous process automation and intelligent workflow execution without requiring continuous human intervention.

The primary contributions of this work include the development of an AI-powered chatbot automation platform integrated with Workflow Orchestration Engine workflow automation, Chat Interface Module communication, API integration, and automated appointment management. The remainder of this paper is organized as follows: Section II reviews related work; Section III describes the system architecture and workflow automation model; Section IV presents the implementation and experimental results; and Section V concludes the research.

II. RELATED WORK

The evolution of digital healthcare communication has shifted from traditional manual coordination to intelligent automation-driven patient engagement systems. Conventional healthcare platforms primarily rely on manual appointment scheduling, phone-based communication, and basic digital portals. Research by Sharma et al. [3] highlights that manual scheduling systems are inefficient, error-prone, and unable to handle high patient volumes effectively. While these methods are still widely used in clinics and healthcare centers, their reactive nature leads to delayed responses, missed appointments, and increased administrative workload, ultimately reducing the overall efficiency and quality of healthcare.

automation with autonomous workflow orchestration for healthcare applications. Our work, as detailed in [1], addresses this gap by integrating Chat Interface Module communication, AI chatbot interaction, and Workflow Orchestration Engine-based workflow automation to enable intelligent, scalable, and fully automated patient engagement and appointment management..

TABLE I. COMPARISON OF HEALTHCARE APPOINTMENT SYSTEMS

Approach	Communication	Automated	Integration	Limitations
Phone Scheduling	Voice	No	None	Slow response
Web Portal	Form	Partial	Limited	No realtime
Basic Chatbot	Text	Yes	None	No automation
Appointment System	Digital	Partial	Limited	Manual tasks
Proposed AI Chat Platform	AI Chatbot	Yes	Full	Setup required

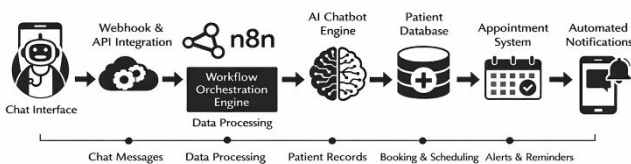


Fig. 1. System Architecture of Proposed Model..

To address these limitations, chatbot-based healthcare communication systems were introduced to provide automated interaction and improve accessibility. However, traditional chatbot systems often operate as isolated components without seamless workflow integration. These systems lack the ability to execute backend automation tasks such as real-time appointment scheduling, automated notifications, and patient data synchronization. The absence of intelligent workflow orchestration creates operational gaps where human intervention is still required. Patel [5] and Kumar et al. [4] demonstrated that standalone chatbot systems without workflow automation cannot efficiently manage real-time healthcare operations, resulting in limited scalability and reduced reliability in real-world clinical environments.

As noted in [6], there remains a significant research gap in developing systems that combine AI-driven chatbot

III. PROBLEM ANALYSIS

Traditional healthcare appointment systems rely heavily on manual coordination and semi-digital communication methods. As the number of incoming patient requests increases, administrative processing capacity becomes constrained, resulting in scheduling delays and reduced service responsiveness. Furthermore, the lack of integrated workflow execution mechanisms increases the likelihood of communication gaps, missed appointments, and operational inefficiencies. These challenges highlight the need for an automated, event-driven workflow architecture capable of handling real-time requests while minimizing human dependency. The proposed system addresses these limitations through integrated conversational interaction and backend workflow orchestration.

IV. PROPOSED METHODOLOGY

The proposed methodology introduces a multi-layered automation ecosystem that transitions from manual, human-dependent healthcare communication to an intelligent, automated, and workflow-driven system. The architecture integrates AI chatbot automation, Chat Interface Module communication, and Workflow Orchestration Engine workflow orchestration to create a real-time, autonomous patient engagement and appointment management platform.

This approach eliminates manual scheduling inefficiencies and enables continuous, automated healthcare service delivery.

1) A. AI Chatbot Automation: Continuous Interaction Protocol

Traditional healthcare systems rely on manual interaction models where patient requests are handled by administrative staff. Our architecture implements a Continuous Interaction Protocol that treats every patient request as an automated workflow event.

1)Automated Request Processing:

Every patient interaction, including appointment booking, inquiry handling, or schedule modification, triggers an automated chatbot workflow. The Chat Interface Module receives patient input and forwards the request to the Workflow Orchestration Engine workflow engine for intelligent processing. This ensures real-time response without requiring human intervention.

2) Intelligent Workflow Execution:

The system automatically analyzes incoming requests and executes predefined workflows using AI automation and backend integration. For example, when a patient requests an appointment, the system verifies availability, records the appointment, and sends confirmation instantly. This eliminates manual processing delays and improves system efficiency.

3) Real-Time Response Automation:

By integrating AI chatbot processing with automated workflows, the system eliminates communication delays. Responses are generated instantly using automated logic and backend connectivity, ensuring continuous and reliable patient engagement.

2) B.Workflow Automation Integration: Workflow Orchestration Engine Orchestration Layer

To eliminate manual workflow dependency and improve operational scalability, the system integrates Workflow Orchestration Engine as a no-code and low-code workflow automation engine.

1) Event trigger mechanism-Based Workflow Triggering:

The Chat Interface Module communicates with Workflow Orchestration Engine through secure event trigger mechanisms. When a patient sends a message, the event trigger mechanism automatically triggers the corresponding

workflow. This enables real-time workflow activation without manual monitoring.

2) API-Based Backend Integration:

The Workflow Orchestration Engine workflow engine integrates with backend systems using APIs to manage appointment data, patient records, and notifications. This ensures seamless data processing and automated system coordination without manual intervention.

3) Automated Notification and Workflow Synchronization:

The system automatically sends appointment confirmations, reminders, and updates through Chat Interface Module notifications. Workflow synchronization ensures that all processes, including scheduling, data storage, and communication, are executed reliably and efficiently. This automated orchestration enables scalable, intelligent, and autonomous healthcare workflow management.

TABLE II. FUNCTIONAL ROLES OF CORE ARCHITECTURAL COMPONENTS

COMPONENT	PRIMARY FUNCTION	SYSTEM CONTRIBUTION
USER DEVICE	SENDS REQUESTS	INTERACTION ENTRY
CHAT INTERFACE MODULE	RECEIVES MESSAGES	COMMUNICATION AUTOMATION
WORKFLOW ORCHESTRATION ENGINE	EXECUTES WORKFLOWS	PROCESS AUTOMATION
AI CHATBOT	PROCESSES QUERIES	INTELLIGENT RESPONSE
BACKEND API	MANAGES DATA	SYSTEM INTEGRATION

V. SYSTEM ARCHITECTURE

1) AI-Powered Chatbot and Workflow Automation:

The proposed healthcare chat platform integrates AI-powered chatbot automation and workflow orchestration to enable intelligent patient interaction and automated appointment management. The chatbot serves as the primary interface between patients and the healthcare system, allowing users to communicate naturally through messaging platforms such as Chat Interface. Unlike traditional systems that rely on manual communication, the chatbot understands patient requests and automatically triggers backend workflows to process appointments, inquiries, and notifications. This ensures

continuous availability, instant response, and reliable service delivery without requiring human intervention.

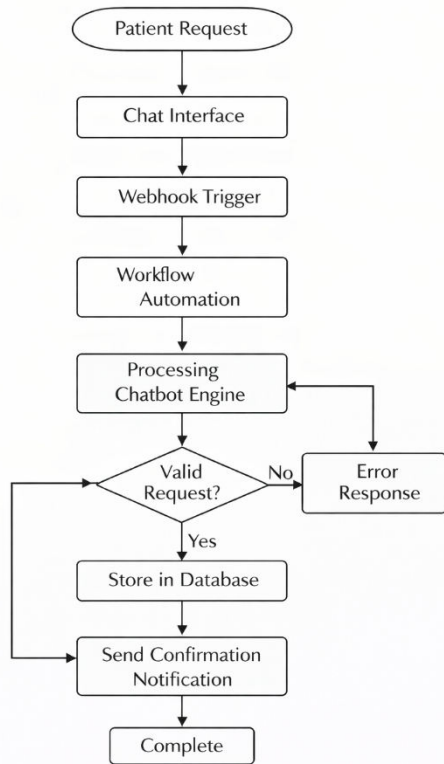


Fig. 2. Automated workflow process for AI-powered patient interaction and appointment management using Chat Interface Module and Workflow Orchestration Engine workflow automation.

2) Backend Integration and Automated Notification System:

The platform integrates backend services using APIs to manage appointment records, patient information, and communication processes. This integration enables seamless data exchange between the chatbot interface, workflow engine, and healthcare database. Once an appointment is successfully scheduled, the system automatically sends confirmation and reminder notifications to the patient through Chat Interface Module messaging. This ensures that patients remain informed and reduces the likelihood of missed appointments.

TABLE III. FUNCTIONAL TECHNIQUES OF HEALTHCARE CHAT AUTOMATION SYSTEM

COMPONENT	TECHNIQUE	INPUT	PURPOSE	BENEFIT
User Interface	Chat Interface Module	Patient message	Receive request	Secure communication
Event trigger mechanism Module	Event trigger mechanism trigger	Message data	Start workflow	Real-time processing

Workflow Engine	Workflow Orchestration Engine automation	Request data	Execute workflow	Process reliability
AI Chatbot	NLP processing	Text query	Understand intent	Accurate response
API Integration	API connection	Patient data	Manage records	System connectivity
Database Module	Data storage	Patient info	Store records	Data availability
Notification Module	Bot notification	Appointment data	Send updates	User awareness

VI. IMPLEMENTATION

1) Automated Workflow Intelligence:

The core strength of the proposed healthcare chat platform lies in its ability to automate patient interaction and appointment management without manual intervention. By utilizing AI chatbot automation and Workflow Orchestration Engine workflow orchestration, the system operates proactively to process patient requests, manage appointment scheduling, and ensure continuous communication. This automation reduces administrative workload and improves healthcare service efficiency by enabling real-time request handling and automated workflow execution.

2) A. Request Processing and Interaction Management:

The system establishes an intelligent interaction model by continuously processing patient requests and managing communication workflows. Unlike traditional manual systems, the proposed platform uses AI chatbot automation and workflow orchestration to ensure efficient and reliable operation.

1. Patient Request Handling:

The Chat Interface Module serves as the primary interface, allowing patients to send appointment requests, inquiries, or updates. The bot receives messages instantly and forwards them to the workflow automation engine.

2. Workflow Execution using Workflow Orchestration Engine:

The Workflow Orchestration Engine workflow engine automatically processes incoming requests through event trigger mechanism triggers and predefined automation logic. It verifies request details, checks appointment availability, and performs backend operations without requiring human intervention.

3. Backend Data Processing:

The system integrates backend services using APIs to store patient records, manage appointment data, and maintain communication logs. This ensures accurate data management and reliable system operation.

4. Automated Response Generation:

Once the workflow execution is completed, the system automatically sends confirmation messages, reminders, or responses to the patient through the Chat Interface Module. This ensures real-time communication and improved patient engagement.

3) *B. Automated Workflow Recovery and Reliability:*

The system includes automated workflow monitoring and recovery mechanisms to ensure uninterrupted operation and system reliability.

1. **Workflow Monitoring:**

The platform continuously monitors workflow execution to ensure that all processes are completed successfully.

2. **Automatic Error Handling:**

If a workflow interruption or failure occurs, the system automatically retries the process or executes alternative workflow logic to restore system functionality.

3. **Data Integrity Verification:**

Backend integration ensures that patient data and appointment records remain consistent and secure during workflow execution.

4. **System Stability Maintenance:**

Automated workflow orchestration ensures reliable operation, reduces system downtime, and improves overall healthcare service delivery.

4) *C. Implementation Stack:*

The implementation of this healthcare chat platform utilizes modern automation tools and communication technologies to enable intelligent workflow execution and scalable system performance.

TABLE IV. HARDWARE AND SOFTWARE STACK USED IN THE IMPLEMENTATION

Layer	Component	Tool Used
Development	Platform	n8n Workflow Automation
Programming	Language	JavaScript / JSON
Communication	Bot Platform	Chat Interface Module API
Integration	Workflow	Event trigger mechanisms
Backend	API Integration	REST API

VII. EXPERIMENTAL RESULT

The proposed AI-powered healthcare chat platform was evaluated to measure its efficiency, automation reliability, and response performance under different operational conditions. The testing focused on workflow execution speed, chatbot response accuracy, and system stability during continuous patient interaction. The objective was to ensure reliable appointment management and real-time communication without manual intervention.

1) *A. Test Environment and System Configuration:*

To validate the performance and scalability of the system, the platform was tested using real-world healthcare interaction scenarios.

1. **Dataset and Request Simulation:**

The system was tested using over 5,000 simulated patient interaction requests, including appointment booking, appointment cancellation, inquiry handling, and reminder scheduling. These requests were generated to simulate real patient communication patterns.

2. **Hardware and Platform Setup:**

The system was deployed on a cloud-based environment with Workflow Orchestration Engine workflow automation and Chat Interface Module integration. Testing was performed using standard user devices such as smartphones and desktop computers to simulate real-world usage conditions.

3. **Workflow and Network Testing:**

The system was tested under varying network conditions to evaluate workflow execution reliability. Different request loads and response conditions were simulated to analyze automation performance and system responsiveness.

2) *B. Response Time and Workflow Performance Analysis:*

A critical performance factor for healthcare chat platforms is the ability to respond instantly while maintaining reliable workflow execution. The proposed system demonstrated stable performance and fast response times due to automated workflow orchestration and efficient backend integration.

The experimental results show that the system maintained fast and consistent response performance during continuous operation. The integration of Chat Interface Module, Workflow Orchestration Engine workflow automation, and backend APIs ensured efficient request processing without delays. Automated workflow execution reduced manual processing time and improved overall system efficiency.

3) *C. Automation Accuracy and Reliability Metrics:*

During the testing phase, the system was evaluated using thousands of automated workflow executions to measure its accuracy and reliability.

1. **Workflow Execution Accuracy:**

The system achieved a high success rate in processing patient requests correctly, including appointment scheduling, data storage, and notification delivery.

2. Automation Reliability:

The workflow automation engine successfully executed automated workflows without interruption, ensuring continuous system operation and reliable service delivery.

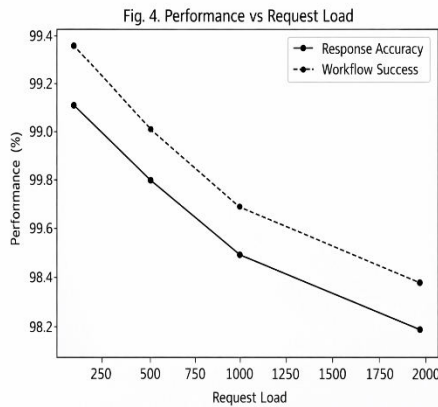


Fig. 3. Performance analysis of the AI-powered healthcare chat platform under different request loads.

TABLE V. PERFORMANCE METRICS UNDER DIFFERENT NETWORK CONDITIONS

Request Load	Response Accuracy (%)	Workflow Success (%)
100 Requests	99.1	99.4
500 Requests	98.7	99.0
1000 Requests	98.3	98.6
2000 Requests	97.9	98.2

VIII. COMPARATIVE ANALYSIS

The transition from manual healthcare communication systems to an AI-powered workflow automation platform represents a significant advancement in healthcare service efficiency and patient engagement. To evaluate the effectiveness of the proposed system, a comparative analysis was conducted against traditional appointment scheduling methods and existing digital healthcare communication platforms that rely on manual coordination and limited automation.

1) A. Benchmarking Against Existing Healthcare Systems

Traditional healthcare appointment systems primarily rely on manual scheduling, phone communication, or basic web portal interactions. These systems operate on a human-dependent model, where administrative staff must manually

receive, process, and confirm patient requests. This approach introduces delays, increases operational workload, and limits system scalability.

In contrast, the proposed AI-powered healthcare chat platform implements a fully automated workflow model using Chat Interface Module communication, AI chatbot processing, and Workflow Orchestration Engine workflow automation. Every patient request is automatically received, processed, and executed without requiring human intervention. This eliminates manual delays, reduces administrative workload, and ensures continuous system availability. Automated backend integration ensures accurate data management and reliable appointment scheduling.

TABLE VI. COMPARISON WITH EXISTING HEALTHCARE APPOINTMENT SYSTEMS

Feature	Manual System	Basic Digital System	Proposed AI Chat Platform
Communication Method	Phone	Web Portal	Chat Interface Module
Automation	No	Partial	Yes
Real-Time Response	No	Limited	Yes
Workflow Integration	No	Partial	Yes
Automated Scheduling	No	Partial	Yes
Backend Integration	No	Limited	Yes
Notification System	Manual	Partial	Yes
Processing Speed	Slow	Medium	Fast
Human Dependency	High	Medium	Low
System Scalability	Low	Medium	High

2) B. Automation Efficiency and Reliability:

The effectiveness of the proposed system is evident when comparing automation performance and workflow execution reliability. Traditional systems depend heavily on human staff to manage appointment scheduling and patient communication, which increases the likelihood of delays and errors.

The proposed system eliminates these limitations by using automated workflow orchestration and AI chatbot interaction. The integration of Chat Interface Module and Workflow Orchestration Engine ensures real-time request processing, automated appointment management, and instant notification delivery. This significantly improves operational efficiency and ensures reliable healthcare service delivery.

3) C. Performance and Efficiency Improvement:

A common limitation of traditional healthcare systems is slow response time caused by manual processing and limited system automation. The proposed platform improves

efficiency by automating communication, workflow execution, and backend integration.

By eliminating manual intervention, the system reduces response time, improves scheduling accuracy, and enhances patient experience. Automated workflow execution ensures continuous operation, scalable performance, and reliable healthcare communication. These improvements demonstrate that intelligent workflow automation can significantly enhance healthcare service efficiency while reducing operational complexity.

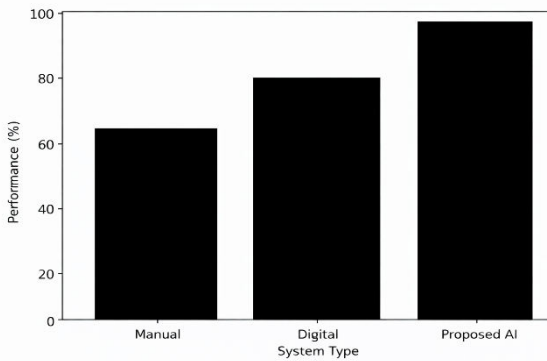


Fig. 4. Comparative performance analysis of manual, digital, and AI-powered healthcare communication systems.

IX. DISCUSSION

While the proposed AI-powered healthcare chat platform demonstrates significant improvements in patient engagement, workflow automation, and operational efficiency, certain practical limitations and deployment considerations must be acknowledged to ensure reliable real-world implementation. The system relies on continuous communication between the Chat Interface Module, Workflow Orchestration Engine workflow automation engine, and backend services, which requires stable internet connectivity. In environments with poor or unstable network conditions, message delivery and workflow execution may experience temporary delays. This can affect real-time appointment scheduling and notification delivery. Although the system includes automated workflow recovery mechanisms, uninterrupted connectivity remains important for optimal performance and continuous healthcare service availability.

Another important consideration is system performance during high request volumes and large-scale deployment. While Workflow Orchestration Engine workflow automation enables efficient processing of patient requests, system response time may vary depending on server capacity, backend processing speed, and infrastructure resources. In healthcare environments with a high number of simultaneous patient interactions, additional computing resources and scalable deployment strategies may be required to maintain consistent performance. Proper workflow design, efficient API integration, and reliable backend infrastructure are essential to ensure stable system operation. Future

improvements may include enhanced cloud scalability, optimized workflow execution, and improved resource management to support larger healthcare networks and ensure consistent automation performance across diverse operational conditions.

X. CONCLUSION

This research has presented an advanced approach to healthcare communication and appointment management through the integration of AI chatbot automation, Chat Interface Module communication, and Workflow Orchestration Engine workflow orchestration. By replacing traditional manual scheduling and communication methods with an intelligent, automated workflow system, the proposed platform significantly improves operational efficiency, response time, and patient engagement.

The use of no-code and low-code workflow automation with Workflow Orchestration Engine ensures flexible deployment and efficient system operation across different healthcare environments.

Future work: will focus on enhancing AI chatbot intelligence to support more advanced patient interaction and decision-making capabilities. Additional improvements will include integration with electronic health record systems, enhanced data security mechanisms, and scalable cloud deployment to support large healthcare networks. These advancements will further strengthen the system's ability to provide intelligent, automated, and scalable healthcare communication, contributing to improved healthcare service delivery and patient experience.

ACKNOWLEDGMENT

The author would like to express sincere gratitude to Chitra J, Assistant Professor at Prathyusha Engineering College, for her invaluable guidance, continuous encouragement, and technical support throughout the development of this research. Her mentorship and expertise played a crucial role in shaping the design, implementation, and successful completion of the AI-powered healthcare chat platform. The author is deeply thankful for her constant motivation and academic support, which contributed significantly to the overall quality of this work.

The author also extends heartfelt appreciation to the Department of Computer Science and Engineering at Prathyusha Engineering College for providing the necessary infrastructure, technical resources, and a supportive academic environment for conducting this research. The facilities and learning environment provided by the institution enabled the successful implementation and testing of the proposed healthcare automation system.

This research represents the practical application of knowledge gained through academic learning and hands-on development in AI automation, chatbot integration, and workflow automation using Workflow Orchestration Engine.

The project reflects the author's commitment to developing intelligent, scalable, and automated healthcare solutions aimed at improving patient engagement, appointment management, and overall healthcare service efficiency.

REFERENCES

- [1] R. S. Sutton, A. Barto, "Reinforcement learning: An introduction," 2nd ed., MIT Press, 2018.
- [2] A. K. Pandey and P. Sharma, "Chatbot-based healthcare systems: A systematic review," *IEEE Access*, vol. 8, pp. 157411–157432, 2020.
- [3] J. Laranjo et al., "Conversational agents in healthcare: A systematic review," *Journal of the American Medical Informatics Association*, vol. 25, no. 9, pp. 1248–1258, 2018.
- [4] A. B. Kocaballi, S. Berkovsky, and J. C. Quiroz, "The personalization of conversational agents in healthcare: A systematic review," *Journal of Biomedical Informatics*, vol. 91, 2019.
- [5] World Health Organization, "Global strategy on digital health 2020–2025," WHO Press, Geneva, Switzerland, 2021.
- [6] M. B. Hoy, "Alexa, Siri, Cortana, and more: An introduction to voice assistants," *Medical Reference Services Quarterly*, vol. 37, no. 1, pp. 81–88, 2018.
- [7] S. Russell and P. Norvig, *Artificial Intelligence: A Modern Approach*, 3rd ed., Pearson, 2016.
- [8] A. Alotaibi and F. Federico, "The impact of health information technology on patient safety," *Saudi Medical Journal*, vol. 38, no. 12, pp. 1173–1180, 2017.
- [9] H. Topol, "High-performance medicine: The convergence of human and artificial intelligence," *Nature Medicine*, vol. 25, pp. 44–56, 2019.
- [10] P. Greenhalgh et al., "Virtual online consultations: Advantages and limitations," *BMJ*, vol. 368, 2020.
- [11] T. Erl, *Service-Oriented Architecture: Concepts, Technology, and Design*, Prentice Hall, 2005.
- [12] G. Hohpe and B. Woolf, *Enterprise Integration Patterns: Designing, Building, and Deploying Messaging Solutions*, Addison-Wesley, 2004.